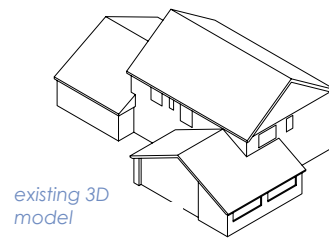


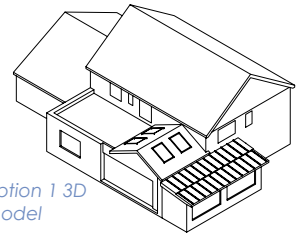
Private residence, Hawkshead:  
Design development

The brief and site of this project required careful consideration to make the most of the topography and views. Communicating the proposals was best achieved through a physical model that in itself became a design tool, changing and adapting as the design was refined.

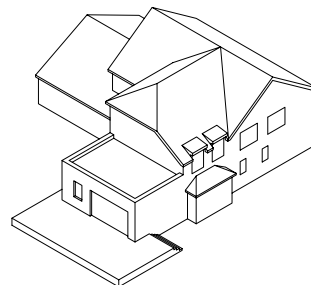
option 4  
1:200 model



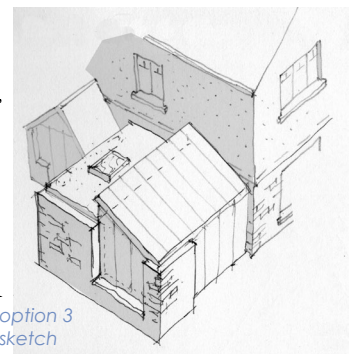
existing 3D  
model



option 1 3D  
model



option 2 3D  
model



option 3  
sketch

Above: Design development with 3D CAD and hand sketching  
Below: Design development of west elevation

option 5  
1:200 model



existing west elevation  
(right)



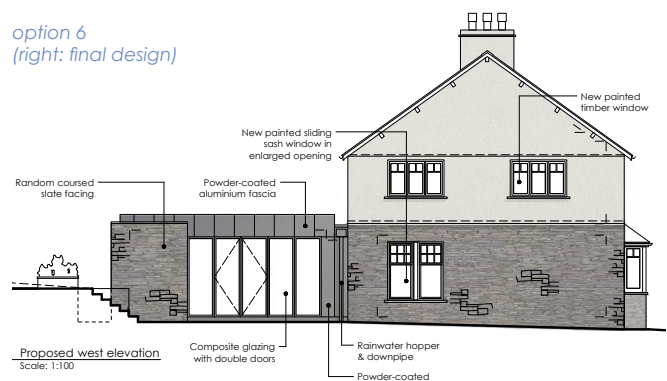
option 4  
(right)



option 6  
1:200 model



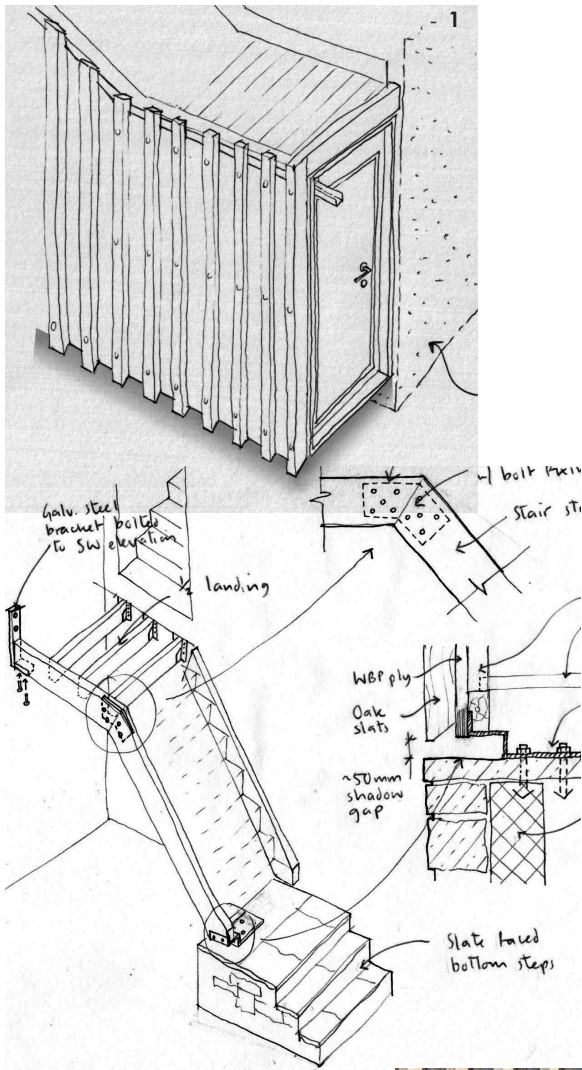
option 6  
(right: final design)





## Maker's Mill, Keswick: Floating stair

To provide more valuable space to the residential unit and a separate access, we suggested that a new staircase be added to the exterior of the building. Inspired by a genuine cantilever stair at a Swiss archaeological museum, we detailed the new stair to appear to "float" above the flood resilient stone base



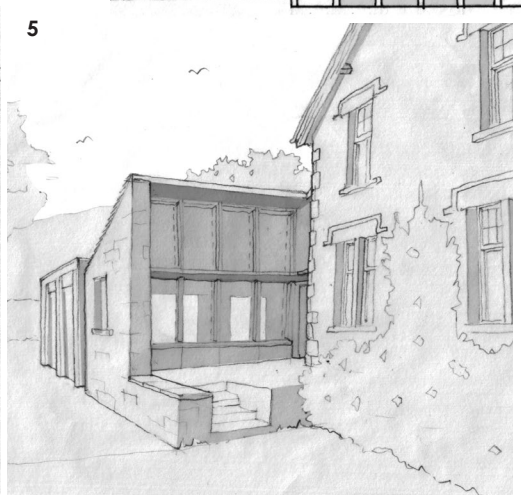
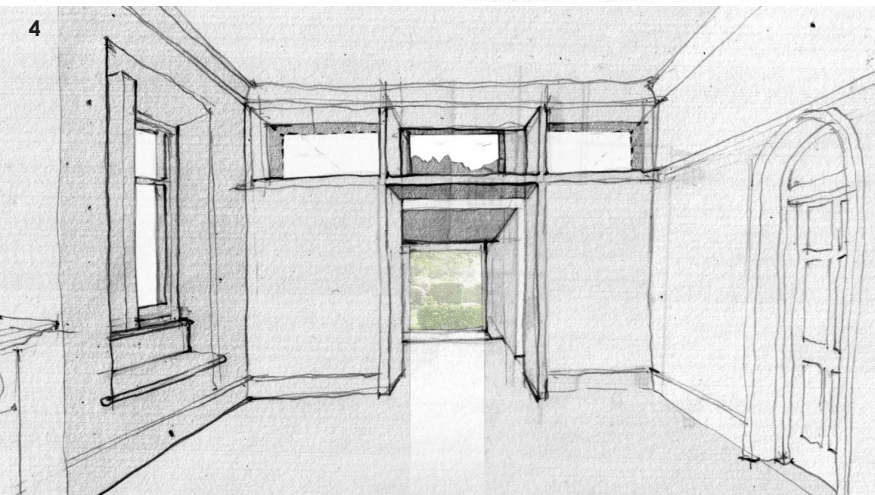
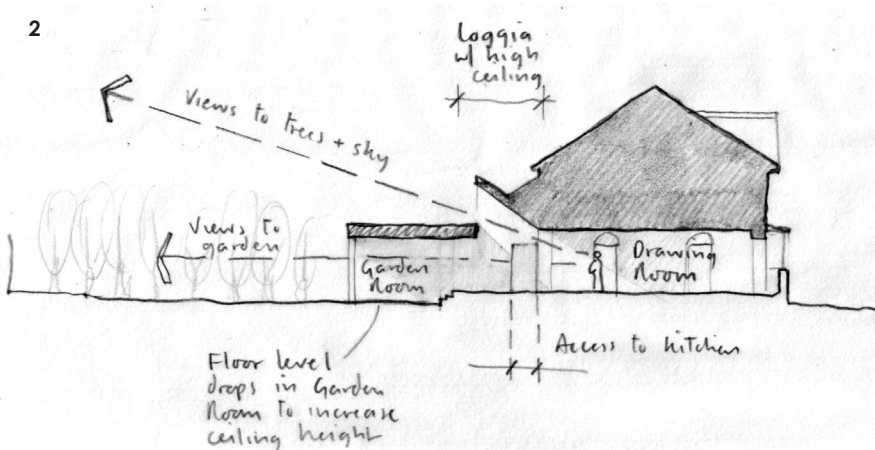
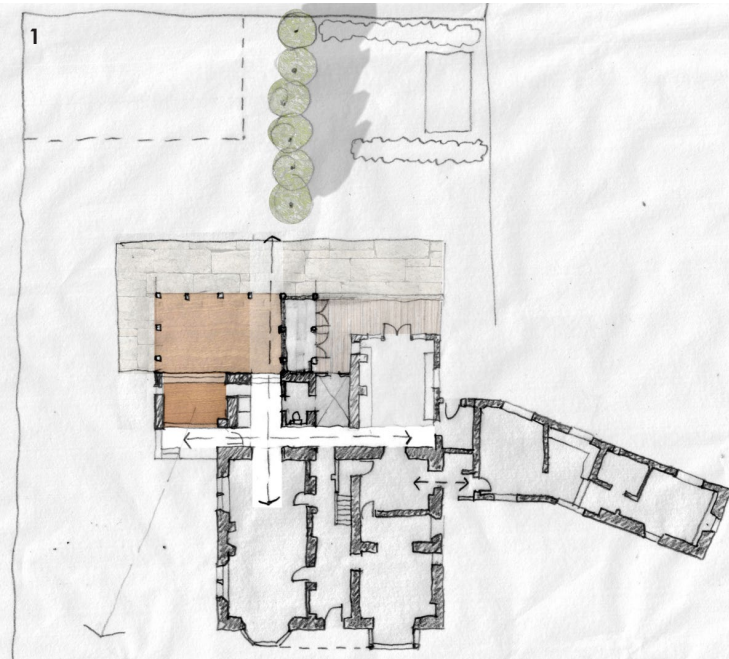
1. Concept sketch and working details
2. Precedent image: archaeological museum, Chur (Peter Zumthor)
3. Completed stair with oak weather boarding
4. Detail of floating base





Private residence, Coniston  
Design development

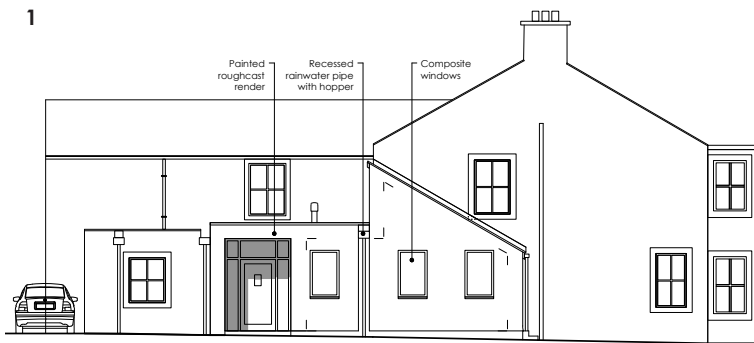
Following a comprehensive period of occupancy and use analysis we prepared a number of sketch options for client comment. These involved a concept plan (1) and section (2) showing the main move of creating a new circulation axis improving connections and views through the house and proposing replacement of a self catering cottage with a new extensively glazed garden room. This concept was developed through a series of elevation studies (3) to more finished views and sketches of the completed project (4 and 5)



## Private residence, Bassenthwaite Design development

We explored a number of design options to arrive at the best way to extend this 19th Century double fronted house on the shores of Bassenthwaite. From quite contemporary forms to the eventual pitched roof designs, within these options we tested the effect of different material combinations on these forms

1



1 - Options for elevations and roof profiles

2 - Material study options for option 1

3 - The completed extension showing the pitched gable design that complements the existing house

2

All render



Stone and render



All stone, zinc roof



stone, render and slate hung fascias



3

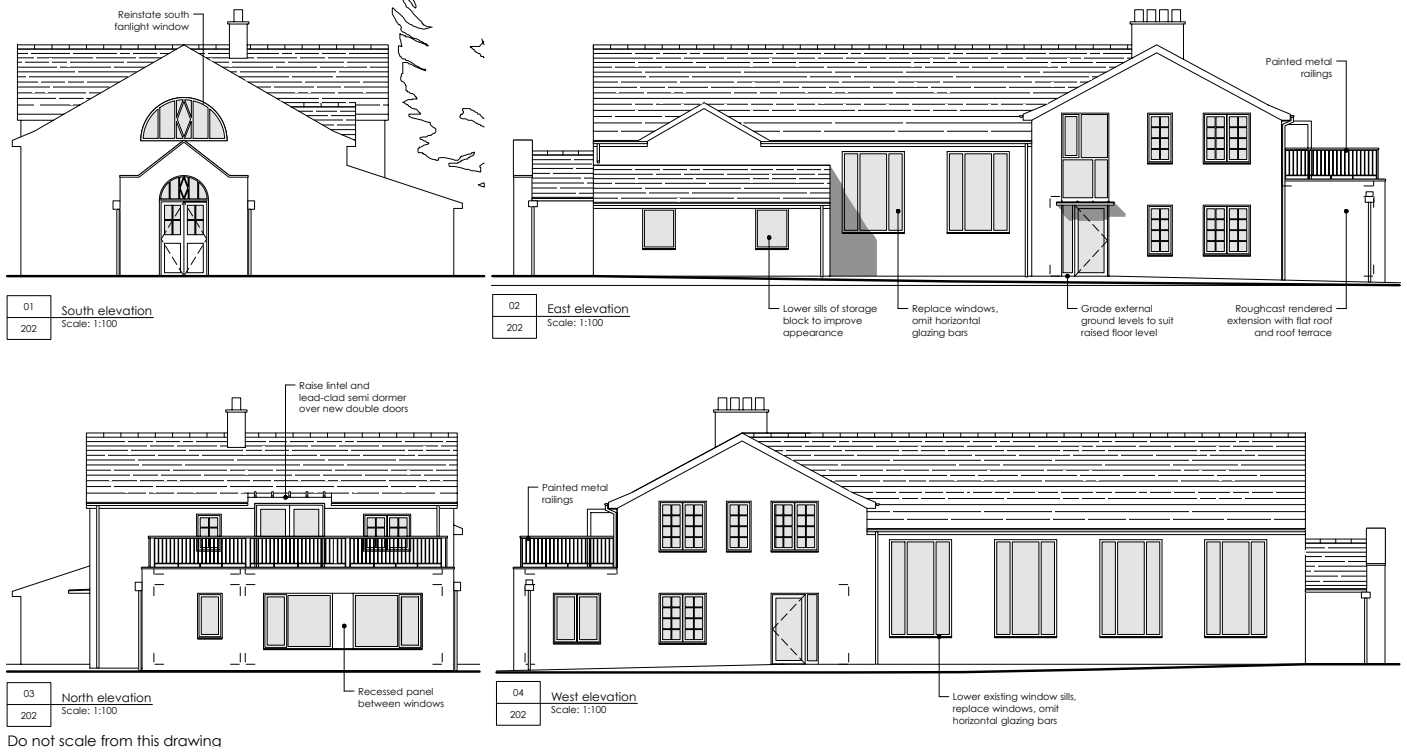




## Borrowdale Institute, Rosthwaite: Extension and refurbishment of a village hall

Our client had prepared a detailed brief following a community engagement process. We then developed the brief and provided a range of options ranging from minimum intervention to a more elaborate design. We chaired a community consultation event at the Institute, incorporating further comments from the public before we obtained planning permission for the final design.

1



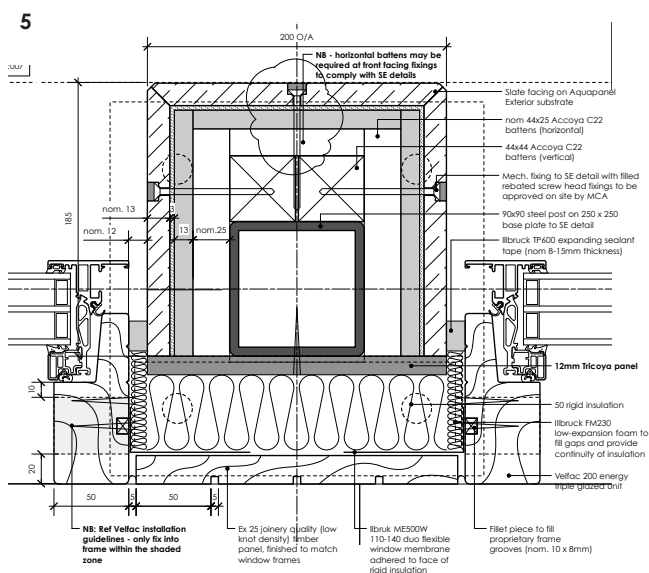
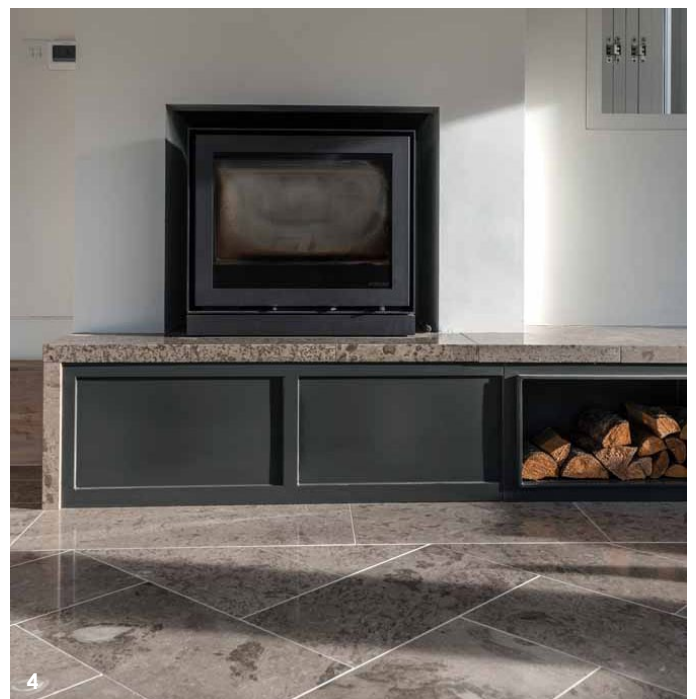
- 1 - Proposed elevations showing new extension to the north with roof terrace
- 2 - 1:100 presentation model
- 3 - Explaining the proposals at a public consultation



## Private residence, Coniston

### Materials and details

Originally designed to be a timber frame, the garden room was re-detailed to be clad in slate to avoid complications with differential weathering on its differently oriented facades. An involved but rewarding process of design workshops was held between us, the main contractor and the specialist subcontractors to ensure the sharpness of detailing of the built work.



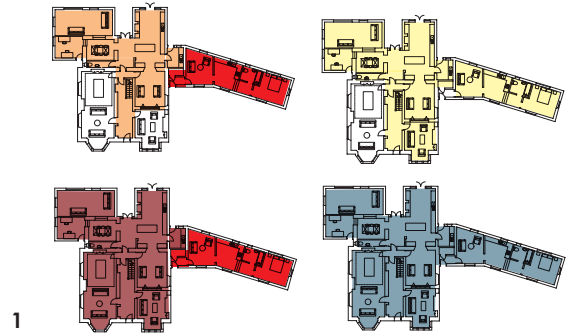
- 1 - Elevation detail with honed slate cladding (L) and rubble stone walling with High Fell quoins
- 2 - Composite windows with powder-coated aluminium cladding and solar shade to breakfast room east-facing elevation
- 3 - South elevation of garden room with triple glazing and powder-coated aluminium panels within the slate frame
- 4 - Raised hearth and stove with herringbone pattern flooring
- 5 - Example detail drawing of garden room steel frame cladding



## Private residence, Coniston

### Extension and refurbishment of a detached 19th century house

A complete refurbishment and reconfiguration of a double fronted Victorian house. Following a comprehensive period of occupancy and use analysis we developed a design that involved the removal of an attached self-catering cottage to greatly improve the relationship between the house, the garden and the views beyond. The design process did not end there, as the two-year construction phase involved very close collaboration between us, the main contractor and specialist subcontractors to ensure the delivery of the sharply detailed and boldly contemporary extension.



1 (above) - Use analysis diagrams throughout the year

2 (left) - The original building with cumulative additions including a recent kitchen extension (left), wide staircase dormer and self-catering cottage that completely blocked the relationship of the main house to the garden and views.

3 (below) - The completed project with re-faced and re-glazed kitchen, modified staircase dormer, new matching bedroom dormers for the attic conversion, and slate-faced garden room extension that makes the most of the spectacular setting.

